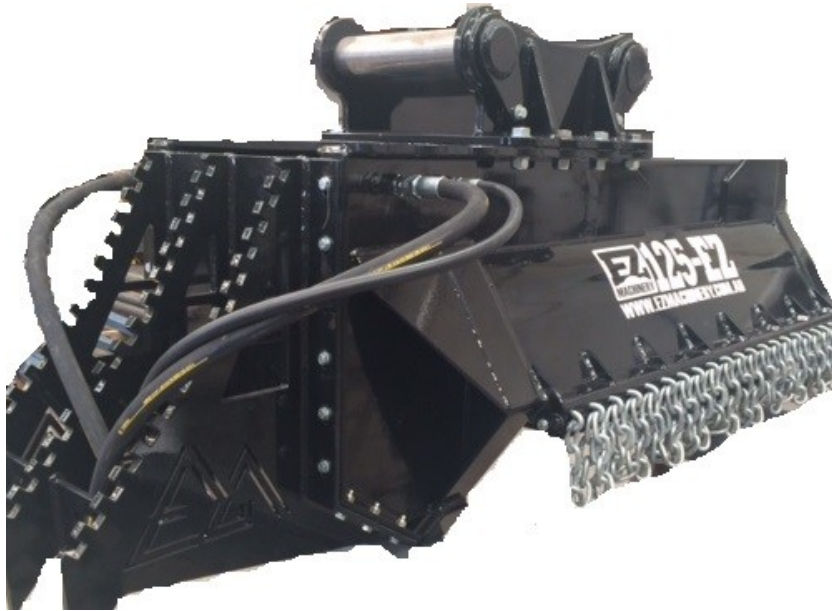


HYDRAULIC FLAIL MULCHER



- Designed, manufactured and assembled at our SE Qld facility
- Available in 4 sizes to suit excavators from 1.8 tonne upwards, includes custom hitch
- Operating range from 30 to 220 LPM hydraulic flow
- Easily eradicates lantana, and other invasive growth
- Long lasting Italian manufactured reversible flail blades. Thumb saddle as standard feature. Hydraulic claw available as an optional extra
- Maximum 300 Bar Pressure
- Mulches trees up to 250mm
- Direct Drive Hydraulic Motor. No belts or pulleys
- Solid Steel build



Designed for use on excavators, skid steer loaders (most sizes) and back-hoes. Capable of using both standard and high flow hydraulics, our Mulcher's are perfect for all types of machinery. The Mulcher comes fitted with a high performance direct drive motor (with no need for aftermarket cooling) and plumbed specifically to suit the auxiliary of your machine.

The heavy duty frame supports a swinging flail cutter drum. There are three flails, two Y Blades and a single hammer or flat blade attached to each mounting lug on the cutter drum. This combination has proven to be the most versatile, enabling a relatively fine cut for general pruning, brush and grass cutting, while also having the ability to mulch much larger branches up to 250mm.

Flail Mulchers are an excellent choice for tree pruning or brush and grass cutting near populated areas as the cut debris is directed downward and not outward. Utilising a swinging flail arrangement the flails will swing back when striking hard objects hidden in undergrowth and therefore sustain little if any damage.



1300 736 982





The Flails are reversible prolonging the service life of the blades and therefore keeping the replacement of your blades to a minimum. We always have replacement flails in stock, for customers when required.

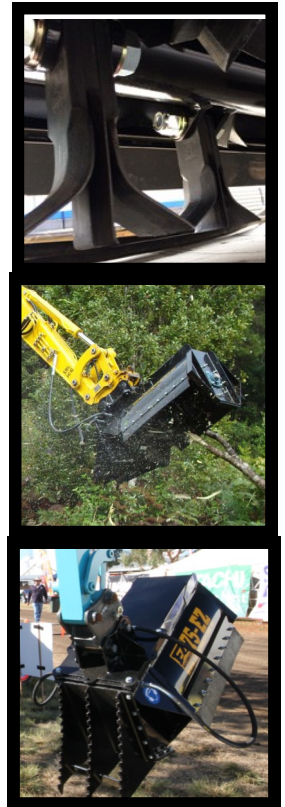
A hydraulic motor is matched to the hydraulic output of your Machine for superior power delivery and anti-vibration mounts are used to reduce vibration instead of high maintenance belts and pulleys. This ensures you get the maximum performance from your mulcher using your standard hydraulic system. The Machines are fitted with two main high pressure hoses for hydraulic inlet and outlet, and in most cases, don't require a case drain.

Each machine comes with a custom built hitch to suit your machine (Excavator and Back Hoes), avoiding any unnecessary wear on the pins or bushes. Skid steer loaders may incur a small additional cost for the hitch.

This Machine also comes with a built-in thumb saddle that when combined with the optional hydraulic thumb grab, can easily pick up and remove obstacles such as timber and rocks. The thumb saddle can also be used to drag material out of the way without damaging the mulcher body if a thumb saddle is not fitted to the dipper arm.

The Mulchers are locally designed and manufactured in Brisbane, Australia to suit Australian conditions, this means that they are equipped to do the job you need with amazing durability.

For further information on the range of Mulchers including specifications and warranty call 1300 736 982.



MODEL	Mulcher 75-EZ	Mulcher 100-EZ	Mulcher 125EZ
Working Width	750mm	1000mm	1250mm
Weight	300kg	390kg	750kg
No of Flails	24	30	42
Thumb saddle	Yes	Yes	Yes
Excavator Size	3-5 t	5-12 t	12t +
Material	150mm	200 mm	250 mm
Hydraulic Flow Range	35 to 65 LPM	50 to 95 LPM	85 to 225 LPM
Max Pressure	240 bar	240 bar	240 bar
Drum Speed	2000-2400 rpm	2000-2400 rpm	2000-2400 rpm



www.ezmachinery.com.au or 1300 736 982